


Blueport Procedures

First install the Bluetooth Dongle if you purchased one from Stenotech. As long as your computer has Windows XP Service Pack 2 or higher or Windows Vista this device should find the correct drivers and install itself.

After you installed the Dongle or if your computer has built in Bluetooth please follow the Bluetooth connectivity instructions.

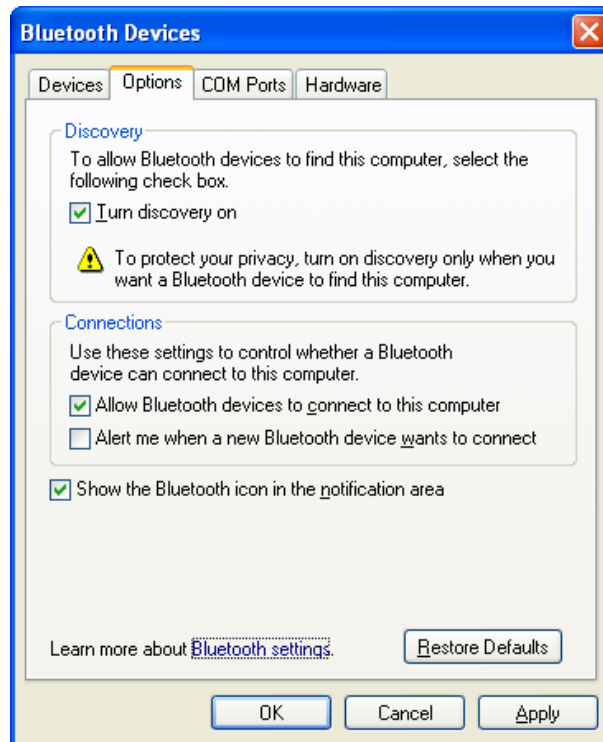
1. Go into the Bluetooth area on your computer generally found in the

Control Panel. Make sure you see the Bluetooth Icon.  If not then more than likely your computer doesn't have built-in Bluetooth and you will need to purchase a Bluetooth Dongle.

2. After finding the Bluetooth area you want to add a Bluetooth Device. Before doing that make sure you select the options Tab.



3. On the Options Tab make sure that Discovery is turned on. Also check Allow Bluetooth devices to connect to this computer. Optional is “show the Bluetooth icon”, but I would suggest it.

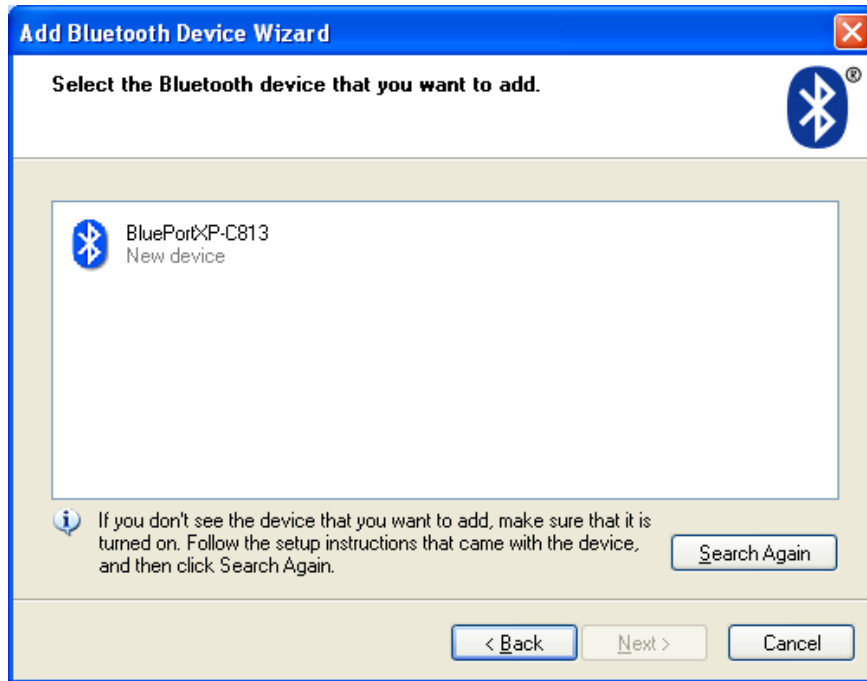


4. Go back to the Devices Tab and select click on the Add Device button. This will bring up the Add Bluetooth Device Wizard.

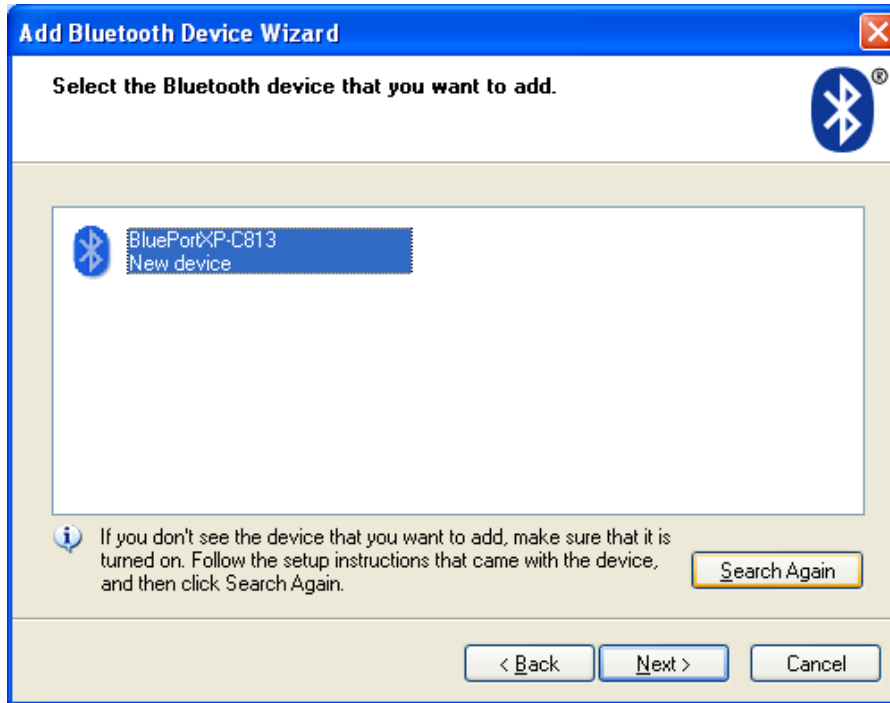


5. Make Sure you check the box next to My device is setup and ready to be found. Wait!!! Now go to your Blueport XP device and turn it on. Don't select the Next button until you turn on the device. It doesn't have to be in your writer at this point. It's up to you.

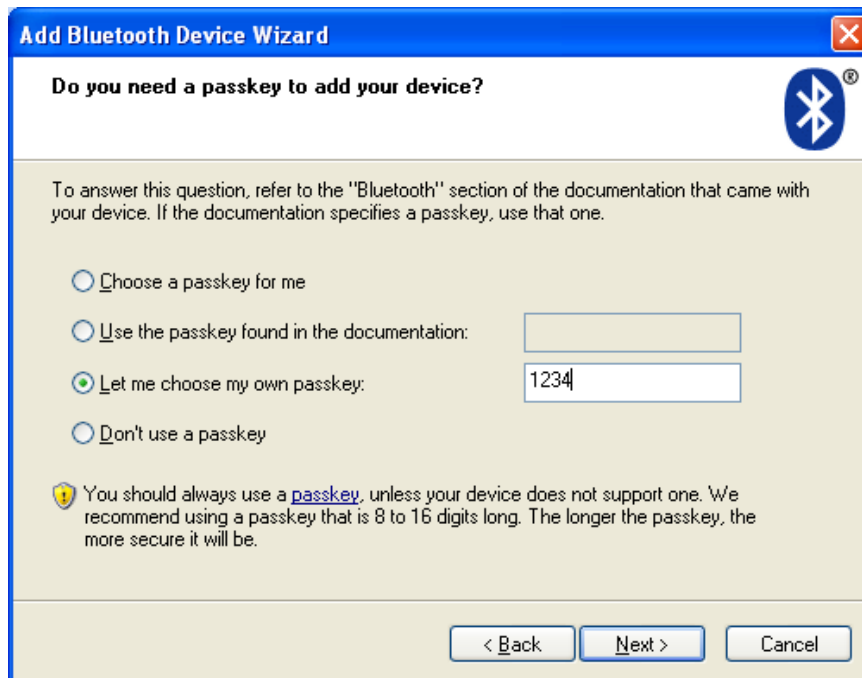
Hit Next! Wait about 30 seconds and it will find the device.



6. It's possible it might also find other Bluetooth devices in the room like a cell phone, etc. Ignore those and click on the Blueport Device XP and then the Next button.



7. After selecting the device and hitting the next button you will come to the below screen: Do you need a passkey to add your device?



8. Make sure you select the option Let me Choose my own passkey. Then type in the numbers 1234. Click the next button.



9. If you completed the above steps correctly you should now get the Completed screen with both a Outgoing COM port and a Incoming COM port. Make a note of the two ports before you click on the Finish button.

10. You want to set your CAT system to connect to the Outgoing COM port. The device on the writer should connect every time without having to do this setup again.